

- Double shot ¥100
- Add gold foils ¥330
- Add whipped cream ¥100
- Organic oat milk ¥150
- Soy milk ¥100
- Decaf ¥100



Drink menu

※tax included Take out,OK!

Please order and pay first at least one drink order per person.



Espresso
solo ¥550
doppio ¥600



Cafe latte
Hot/ICED ¥740



Cappuccino
HOT ¥740
ICED/250ml ¥860



Caramel cafe latte
Hot/ICED ¥850
with whipped cream



Cafe mocha
Hot/ICED ¥880
with sweet chocolate



Macchiato
¥670



Today's black coffee
(Nel drip coffee)
Decaf ¥700
¥720



Cold brew
un sweetened
¥720



Coffee float
Iced coffee with ice cream &
whipped cream
¥800



Espresso
tonic
with soda
¥800

※decrease in amount of gold
depends on the price of gold



Kinpaku coffee
Coffee with whipped cream
&gold foil
Hot/ICED ¥1000



Americano
Hot ¥700
ICED ¥800



Irish coffee
※contains alcohol
Hot/ICED ¥980



Orange
juice
¥680



Cream soda
melon soda
with ice cream
¥780



Chocolate drink
Hot no whipped cream
ICED with whipped cream
¥720



Matcha latte
un sweetened
Hot/ICED
¥850



Matcha
green tea
un sweetened
Hot/ICED
¥850



Lemonade
water base ¥890
soda base ¥950



Black tea Kaga
(Made in Kaga, Japan)
¥850

Only KANAZAWA



Hyakumangoku Beer
※contains alcohol,
served with nuts
per bottle ¥1080

Homemade Cake

1piece ¥550



Chocolate gateau

Baked
cheesecake

Pumpkin cake
(made with rice flour)(chestnuts paste cake)

Mont Blanc

Chestnut tart

Amazake milk roll cake

Coffee brandy
cake

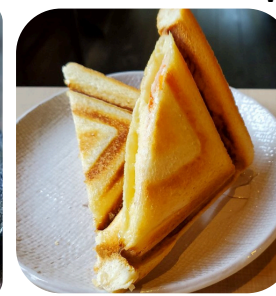
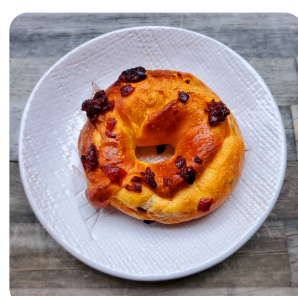
Coffee jelly
This is a cold dessert,
made with coffee and gelatin.

Bread & Homemade Brioche

Brioche is a type of sweet bread made with flour, eggs, butter and milk

Wagashi in kanazawa

Wagashi/Matcha-Fu-Manju 1 piece ¥580



Matcha-Fu-Manju is a round wheat gluten cake filled with sweet matcha bean filling. It is chewy, sticky and very tasty.

Brioche
with sugar butter
¥280

Brioche
with cheese
¥280

Brioche with
cranberry
¥280

Brioche ogura
(with ice cream &
red bean paste)
¥750

Grilled sandwich
(with ham, cheese, potato
salad & pizza sauce)
¥690

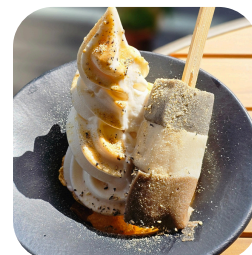
Coffee & Matcha-Fu-Manju set
(Black coffee) **Hot/ICED** ¥1180

Desserts

栗Millet

RECOMMENDED

胡麻Sesame



Soft serve ice cream
with KAGAFU & soybean flour

Soft serve ice cream

Affogato
espresso & ice cream

Ice cream
with gold foil & cake.

Coffee jelly
with ice cream

KAGAFU & Matcha ice cream

(ice cream, red bean paste, whipped cream) ¥1080

¥880

¥690

¥980

¥1080

¥980

棒茶Kaga-bocha



Ice cream desserts



店内とテイクアウト料金が違います



Coffee jelly with ice cream

コーヒーゼリーソフト
¥980



Ice cream with gold foil & cake.

金箔ソフト
¥1080



Espresso affogato

アフオガード
¥980



KAGAFU & Matcha ice cream
(ice cream, red bean paste, whipped cream)

加賀麩とお抹茶のジェラート
¥1080



Soft serve ice cream

ソフトクリーム
¥690



Coffee jelly with ice cream

コーヒーゼリーソフト
¥880



Ice cream with gold foil & cake.

金箔ソフト
¥880



Espresso affogato

アフオガード
¥880



KAGAFU & Matcha ice cream
(ice cream, red bean paste, whipped cream)

加賀麩とお抹茶のジェラート
¥980



Soft serve ice cream

ソフトクリーム
¥500



Rare and wonderful coffee beans

Panama Esmeralda Geisha Private Collection La Esmeralda Farm Geisha/Washed /Light roast

パナマ・エスメラルダ農園ゲイシャ

期間限定！ -ゲイシャ種・ウォッシュド/ライトロースト

Limited edition beans from Panama. Very delicious!

Region Panama (Boquete district)

Elevation 1600 ~1800m

Climate: Relatively heavy rainfall

Process: Sun dry, Natural

Tasting notes:

Sweet and sour like lemon, and orange ,floaral
jasmine notes, smooth and pleasant aftertaste

ゲイシャ・ラテ

ゲイシャ・ネルドリップ

ゲイシャ・トニック



Geisha cafe lattte
Hot/ICED ¥880

Geisha flannel
drip coffee
Hot ¥880
ICED ¥1080

Geisha espresso
tonic
¥980

KANAZAWA HYAKUMANGOKU BEER

KOSHIHIKARI ALE

Rice beer,
light & mild bitterness

コシヒカリエール

石川県産コシヒカリ米を使用したビール、まろやかな
味わいが特徴



WEIZEN

Wheat beer, mild bitterness,
fresh, & light taste

ヴァイツェン

小麦麦芽を50%以上使用、苦味が
少なくバナナのようなフルーティ
ーな香りが特徴



PALE ALE

Barley,
hoppy bitterness

ペールエール

ホップの苦味のきいた
六畳大麦で作られたビール



DARK ALE

Stout, rich taste
nutty & chocolate notes

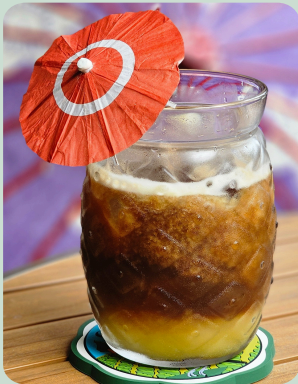
ダークエール

苦味と甘味の調和のとれた
濃厚な味わい。
甘いデザートとも合う

金沢百万石ビール 330ml 各種 (ナッツ付き) ¥1080

POPULAR IN SUMMER COLD COFFEE

Espresso sunrise
エスプレッソ・サンライズ



¥ 860

Espresso & orange juice

Iced cappuccino
アイスカプチーノ



¥ 860

Iced foamed milk & double shot
espresso

Cafe float
カフェフロート



¥ 800

Dark roasted iced coffee
whipped cream with ice cream

Iced Irish coffee
※Alcoholic



¥ 980

Dark roasted iced coffee
whipped cream with irish whisky

Iced Kinpaku coffee
アイス金箔珈琲



¥ 1000

Cold-brewed coffee & whipped
cream with gold flakes.
(you can eat gold flakes)

Iced caramel cafe latte
アイスカaramelラテ



¥ 800

Espresso, caramel syrup,
whipped cream & milk

Iced cafe mocha
アイスカフェモカ



¥ 820

Espresso, chocolate syrup,
whipped cream & milk

Iced cafe latte
アイスカフェラテ



¥ 690

Espresso & milk